

ERA

Mortice Sashlock and Deadlock Fitting Instructions

Installing a Mortice Sashlock and Deadlock


Note: Although the instructions and illustrations refer to sashlocks, the same procedure applies to deadlocks. It is recommended that suitable pilot holes are drilled before fitting fixing screws (especially in hardwood).

To fit a Mortice lock you will require the following tools:

- Drill
- Drill bits (see right)
- Posidriv screwdriver
- Chisel
- Pencil
- Mallet

IMPORTANT: Removal and replacement of critical operational components within the lock outside of ERA's controlled manufacture environments could cause injury and will invalidate the products BS Kitemark, EN 12209 test evidence and any related CE / UKCA / CERTIFIRE certification. Please consult ERA customer services for advice before any attempt to open this product.

Drill bit sizes:

	British Standard Fortress / Classic 5 Lever, Euro and Oval	17mm	11/16"
	Viscount & non Euro Viscount	17mm	11/16"
	3 Lever & Bathroom Mortice Locks	16mm	5/8"

The Fortress Mortice Lock has been certified to BS 3621: 2007+A2:2012 and BS EN 12209:2003 to the following classification:

Category	1	2	3	4	5	6	7	8	9	10	11
Deadlock (261/361)	3	H	8	1	0	F	7	B	A	2	0
Sashlock (262/362)	3	H	5	1	0	F	7	K	D	2	B

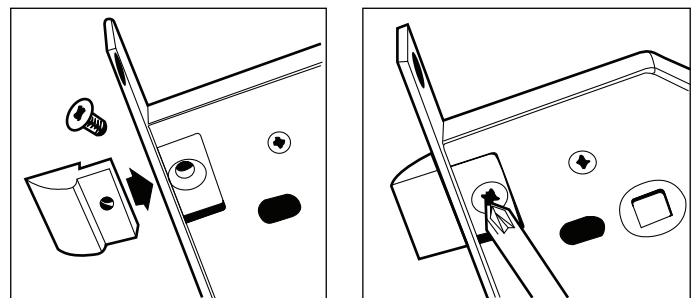
The Viscount Mortice Lock has been certified to BS EN 12209:2003 to the following classification:

Category	1	2	3	4	5	6	7	8	9	10	11
Deadlock (201/301)	1	A	8	1	0	NPD	NPD	NPD	NPD	0	NPD
Sashlock (202/302)	1	A	8	1	0	NPD	NPD	NPD	NPD	NPD	NPD
Deadlock (225/325)	1	A	8	1	0	NPD	NPD	NPD	NPD	0	0
Sashlock (226/326)	1	A	8	1	0	NPD	NPD	NPD	NPD	NPD	NPD

Sashlocks - Reversing the sashbolt (latch)

- Follow these instructions for all 5 Lever Mortice Sashlocks which use screw(s) in latchbolt for reversing latch only.

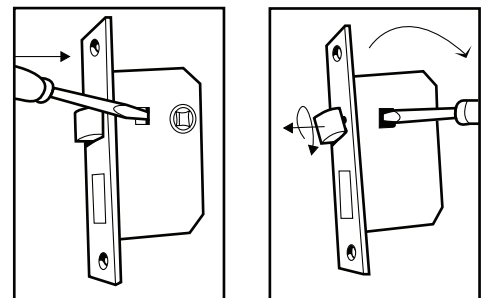
Remove the latch bolt screws, slide out the bolt, revolve through 180° and replace back into lock. Refit screws tightly.



- Follow these instructions for 3 Lever Locks and Bathroom Locks only.

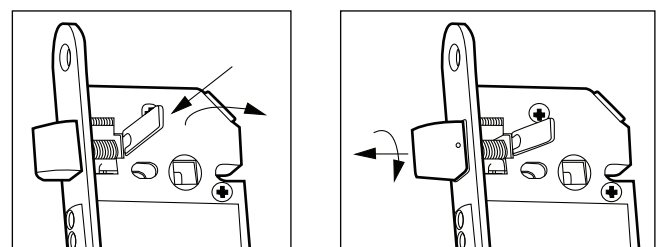
Either: Pull the latch bolt clear of the forend with a pair of pliers and rotate the bolt head 180°.

Or: Lever the bolt head clear of the forend using a screwdriver. Insert behind the bolt head as shown and rotate the bolt head 180°.



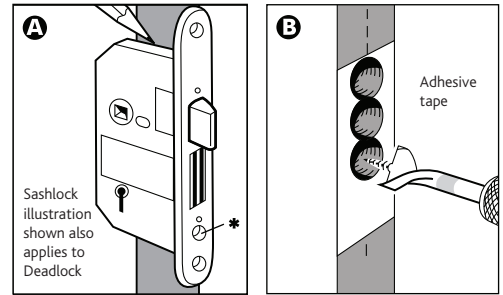
- Follow these instructions for British Standard Fortress Classic locks only.

Lever the bolt head clear of the forend using the fork tool provided; insert the tool behind the shoulder of the latch shaft as shown and rotate the bolt head 180°.



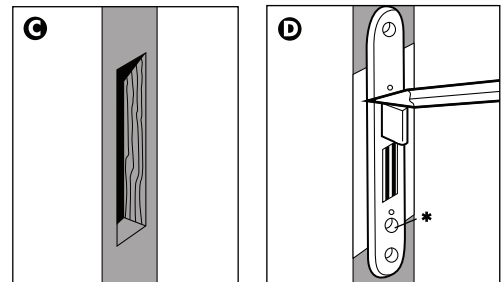
Installing the Lock

- A** Position lock body as near to the mid-height of the door as possible. Place lock body against the door edge and mark top and bottom of the lock body on the door edge, avoiding joints of cross members in the door. **Note:** The hole in the lock end face (marked *) is only used with Cylinder Mortice Door Locks.
- B** Between these two lines mark the central vertical position (dotted line). Along this vertical line drill a series of overlapping holes in the lock depth. In order to drill to the correct depth apply adhesive tape to the drill bit to the measured lock depth (including forend and faceplate depth).
- C** Carefully chisel out remaining wood to make a rectangular hole (mortice) to accommodate lock body.
- D** With lock body inserted, draw around forend on door edge - remember to add removable faceplate before tracing outline. Remove lock and chisel recess to accommodate lock faceplate. Place lock in door and ensure a good fit with faceplate flush with door edge. **Note:** With lock fitted into door, check that the sashbolt is suitable for your door opening. Gently close door. The curved edge of the sashbolt (latch) must be facing the door frame, if not, the sashbolt must be reversed (see first page for instructions).
- E** With the lock held against the door face ensuring faceplate is flush with door edge and in line with lock recess, mark position of the key hole (and spindle). Drill and cut holes on both sides of the door for the key (and spindle). Fit lock flat into door making sure that the key (and spindle) pass freely into the lock. **Note:** When fitting the Euro sashlock, insert the cylinder retaining screw through the lock end face before fitting the faceplate in position.
- F** With faceplate in position secure the lock into the door with screws provided. Fit escutcheons and/or door handles with spindle cut to suit. Test for easy working operation.
- G** With the door open and the bolt in the locked position, close the door gently against the door frame. Mark positions of bottom bolt and top of the latchbolt. Between these two lines mark a central vertical line (dotted line) on the door frame.
- H** Hold box striker up to door frame, ensuring the box section is in line with previous markings. Draw around box section of the box striker on the door frame. Along the vertical line **G**, drill a series of overlapping holes to the box depth. Hold box striker up to frame and draw around the edge. Remove the box striker and chisel out so that box striker sits flush in door frame. Secure the box striker using screws in the central or elongated holes only. Test lock for working operation, and adjust position of the box striker if required. When aligned correctly, fit the two remaining screws.



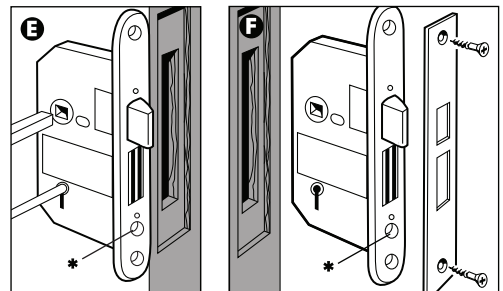
Mark position of lock

Drill hole for mortice



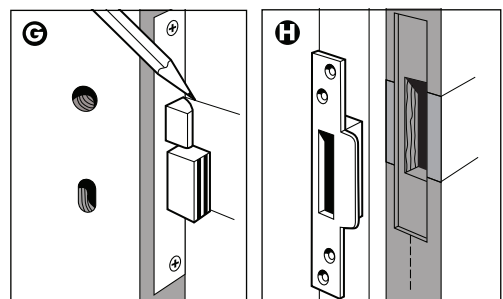
Chisel out mortice

Mark and chisel recess



Mark and drill holes

Fit lock



Mark position

Fit box striker

Important

Fire doors: If stated on the data sheet, this product has been fire tested in combination with a specific intumescent kit/ material to the requirements of BS EN 1634-1. This intumescent kit is critical to the product's fire test evidence and UKCA/ CE / Certifire certification. Failure to supply/ fit the exact material and similar design of kit will invalidate all fire test evidence and certification. ERA accept no responsibility or liability for incorrectly specified intumescent material.

Dangerous substances: the materials used in this device do not contain any dangerous substances in excess of the maximum levels specified in existing European material standards or any national regulations.

Maintenance

Wipe the surface periodically with a soft cloth to remove excess grease or moisture. All moving parts should be lightly lubricated using a light non-acidic mineral oil (e.g. "3 in 1") at least twice per year. The product may need to be adjusted and fixings tightened to ensure a satisfactory operation.

To download the CPR Declaration of Performance, please visit erahomesecurity.com

ERA

Part Numbers

Fortress 5 Lever:
261/ 262/ 361/ 362

Fortress Euro:
263/ 264/ 363/ 364

Viscount 5 Lever:
201/ 202/ 301/ 302

Viscount Euro:
225/ 226/ 325/ 326

CE

2812 - AG5055 (261/361)
2812 - AG5056 (262/362)
2812 - AG5057 (263/363)
2812 - AG5058 (264/364)
2812 - AG7882 (201/301)
2812 - AG7881 (202/302)
2812 - AG7882 (225/325)
2812 - AG7881 (226/326)

UK CA

1121 - AG7804 (261/361)
1121 - AG7805 (262/362)
1121 - AG7806 (263/363)
1121 - AG7807 (264/364)
1121 - AG7898 (201/301)
1121 - AG7897 (202/302)
1121 - AG7898 (225/325)
1121 - AG7897 (226/326)