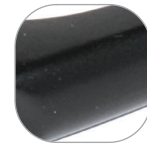


Decorative Letterplate



Features

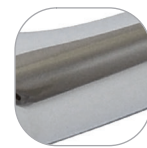
- Stylish midrail letterplate to suit doors 40mm-80mm thick
- Anti-snap flap opens to 180° with fully sprung return
- Supplied with screw fixings
- Available in a range of popular finishes
- Suitable for PVCu, composite and timber doors
- Part of the ERA Decorative furniture range
- Matching window handles, door handles and knocker designs also available



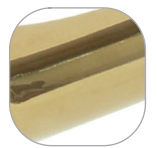
Black



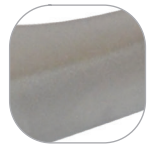
White



Polished
Chrome



Polished
Gold



Satin
Chrome



Mechanical
Guarantee



Surface Finish
Guarantee



PVCu



Timber



Composite

Decorative Letterplate

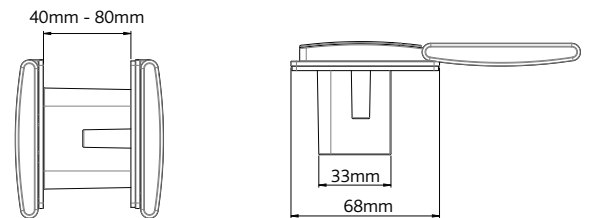
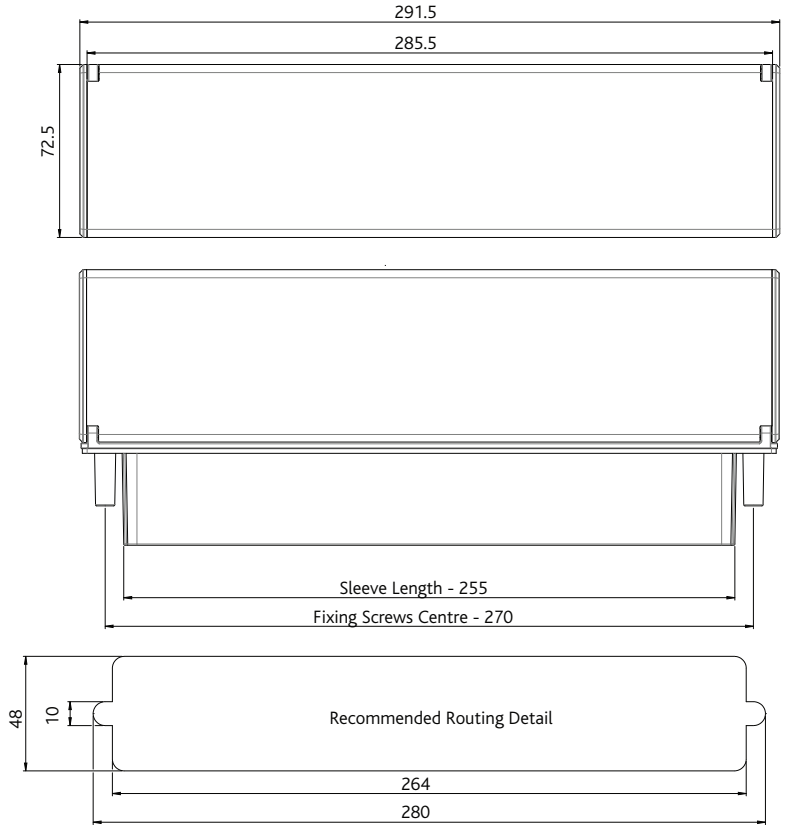
| Ordering Details | |
|------------------------|-----------|
| Product | |
| Decorative Letterplate | |
| Finish | Part No. |
| White | DLPEDWHMR |
| Black | DLPEDBKMR |
| Polished Gold | DLPEDPGMR |
| Polished Chrome | DLPEDPCMR |
| Satin Chrome | DLPEDSCMR |

For additional part numbers please contact our sales office.

| Technical Information | |
|---|--|
| Corrosion resistance | |
| Meets the requirements of BS EN 1670 Grade 4 (240 hours) | |
| Operation | |
| Flap cycle tested to 30,000 cycles. Conforms to the requirements of BS EN 13724: 2002 | |
| Material Specification | |
| Frame and Flap: | High quality Zinc casting |
| Coatings: | White and Black powder painted coated. Polished Gold, Chrome and Satin Chrome Plate, electroplated |
| Screws: | Includes 2 x 4.2mm x 50mm self tapping screws, 2 x 4.2mm x 70mm self tapping screws |

| Maintenance | |
|---|--|
| <p>For continued protection of the quality finish and appearance, we advise routine cleaning of all our external hardware. We recommend wiping it with a clean cloth soaked in warm water and mild detergent every month. Please refrain from using heavy-duty cleaners, containing Chlorine or Potassium. Moving parts should also be lightly lubricated using a light non-acidic mineral oil (e.g., "3 in 1") at least twice per year. The product may need to be adjusted and fixings tightened to ensure a satisfactory operation. This procedure is particularly essential if products are used within a 25-mile radius of coastal areas or close proximity to building sites or large industrial areas, where more frequent cleaning may be required to prevent the accumulation of corrosive contaminants.</p> | |

| Packaging | |
|----------------------------------|--|
| Letterplate | |
| Individually boxed with fixings. | |
| 10 handles in an outer box. | |



4.2mm x 50mm and 4.2mm x 70mm

All dimensions are in mm and are nominal. ERA reserves the right to change specification without notice. It is the responsibility of the door manufacturer to ensure that the finished product meets any required safety and performance specification.