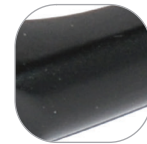


Decorative Exterior Blank Plate



Features

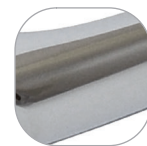
- Stylish softly rounded exterior blank plate
- Available in a range of popular finishes
- Suitable for PVCu, composite and timber doors
- Part of the ERA Decorative furniture range
- Lever, Pad and Offset designs also available



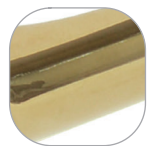
Black



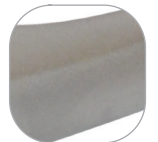
White



Polished
Chrome



Polished
Gold



Satin
Chrome

Decorative Exterior Blank Plate

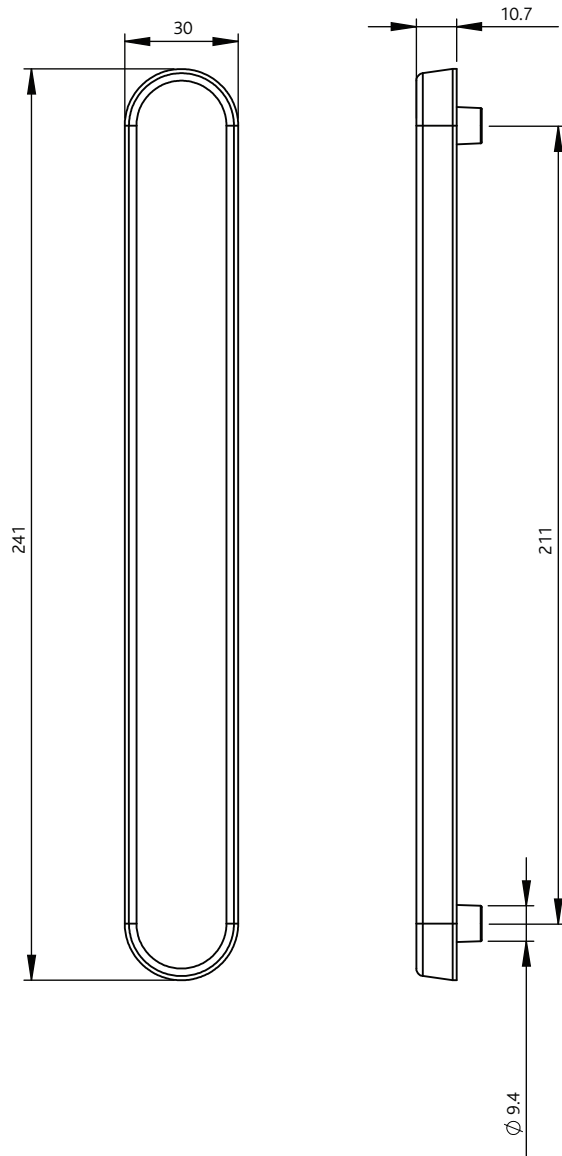
Ordering Details	
Product	
Decorative Exterior Blank Plate	
Finish	Part No.
White	DHAEDWHBP
Black	DHAEDBKBP
Polished Gold	DHAEDPGBP
Polished Chrome	DHAEDPCBP
Satin Chrome	DHAEDSCBP

For additional part numbers please contact our sales office.

Technical Information	
Corrosion resistance	
Meets the requirements of BS EN 1670 Grade 4 (240 hours)	
Material Specification	
Backplate:	High quality Zinc casting or Aluminium Alloy backplate and grip, non-handed
Coatings:	White and Black powder painted coated. Polished Gold, Chrome and Satin Chrome Plate electroplated

Maintenance	
<p>For continued protection of the quality finish and appearance, we advise routine cleaning of all our external hardware. We recommend wiping it with a clean cloth soaked in warm water and mild detergent every month. Please refrain from using heavy-duty cleaners, containing Chlorine or Potassium. Moving parts should also be lightly lubricated using a light non-acidic mineral oil (e.g., "3 in 1") at least twice per year. The product may need to be adjusted and fixings tightened to ensure a satisfactory operation. This procedure is particularly essential if products are used within a 25-mile radius of coastal areas or close proximity to building sites or large industrial areas, where more frequent cleaning may be required to prevent the accumulation of corrosive contaminants.</p>	

Packaging	
Blank Plates	
Individually bagged.	
30 plates in an outer box.	



All dimensions are in mm and are nominal. ERA reserves the right to change specification without notice. It is the responsibility of the door manufacturer to ensure that the finished product meets any required safety and performance specification.