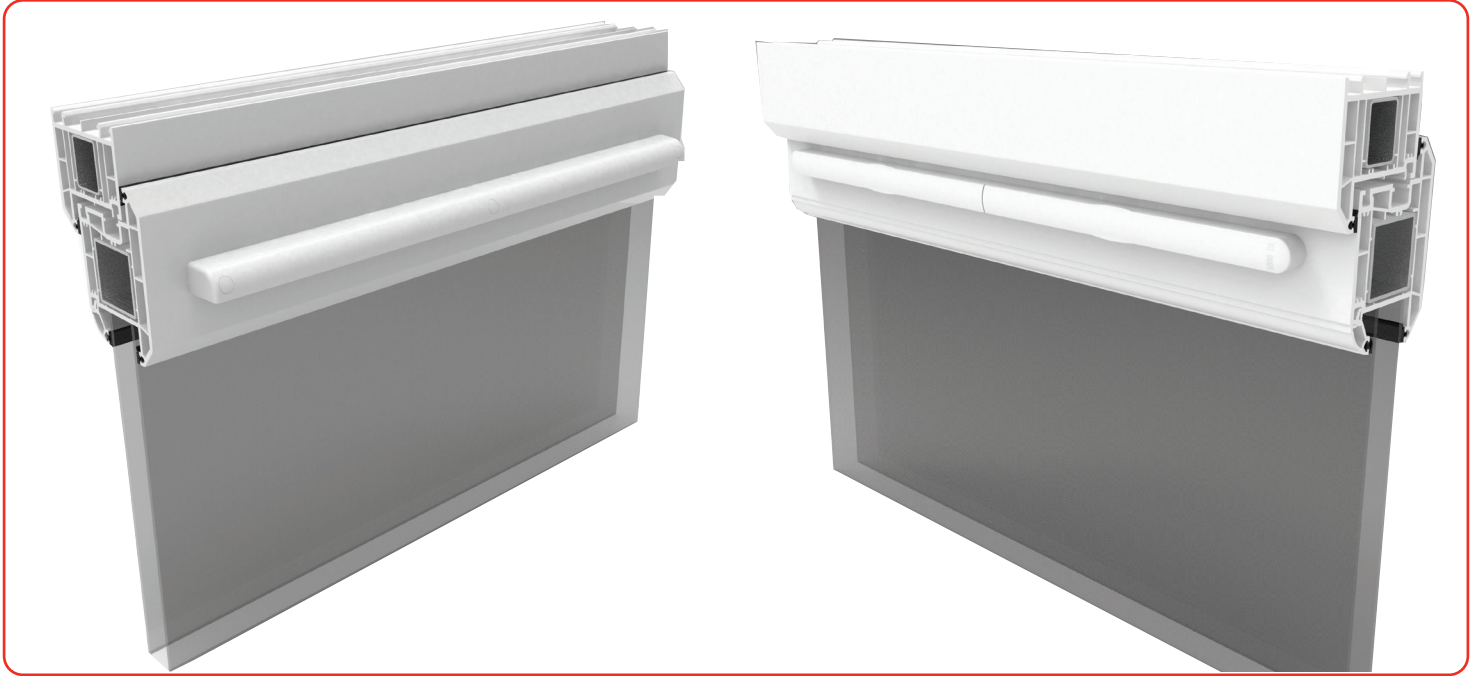
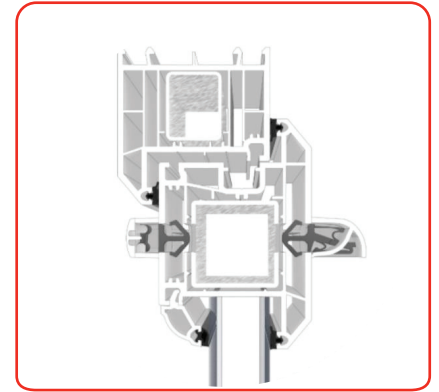


## 5000 Link Trickle Vent



### Features

- Compact sleek design that sits discreetly within the window
- Canopy extends only 25mm
- Aerodynamic feature directs the air flow efficiently through the vents pathway
- Developed to meet the minimum requirements of the building regulations Part F1:2010 (updated December 2021, for implementation June 2022)
- Improved dB noise reduction to new levels of performance whilst retaining the aesthetically pleasing design
- Available in a range of colours to complement the window. Mix and match internally and external vents to accommodate potential different finishes
- Supplied with fixing clips fitted, so the vent easily pushes into place. Installing within seconds
- The clips automatically centre the vent in the rout, aiding location ensuring it is fitted level on the window
- Option to screw fix if preferred, remove the screw caps before fitting and fix as normal



Profile cross section

### Technical Information

#### Equivalent area

Rout Height 10mm: 4000mm<sup>2</sup> EQ, Rout Height 13mm: 5000mm<sup>2</sup>

#### Acoustic D n,e,w (+/-) - vent open

Rout Height 10mm: 32\* (-1;1), Rout Height 13mm: 31\* (-1;1)

#### Acoustic D n,e,w (+/-) - vent closed

Rout Height 10mm: 37\* (-1;1), Rout Height 13mm: 42\* (-1;1)

#### Air leakage

1.29 m<sup>3</sup>/h 0.36 L/s

#### Watertightness

Tested to BS EN 13141-1 5000 vent – Resistant to water penetration using method 1A meeting Class 9A requirement up to and at 600pa in BS EN 12208

#### dB rating

Airborne sound insulation to BS EN ISO 10140-1:2016 and BS EN ISO 10140-2.

## 5000 Link Trickle Vent

### Ordering Details

#### 5000 Link Trickle Vent

| Colour                 | Internal Vent     | External Vent     |
|------------------------|-------------------|-------------------|
| White                  | WVELIWHCF5000     | WVELEWHCF5000     |
| Brown                  | WVELIBRCF5000     | WVELEBRCF5000     |
| Black                  | WVELIBLCF5000     | WVELEBLCF5000     |
| Grey (RAL 7016)        | WVELIGRCF5000     | WVELEGRCF5000     |
| Agate Grey (RAL 7038)  | WVELEGR7038CF5000 | WVELIGR7038CF5000 |
| Pebble Grey            | WVELEPGCF5000     | WVELIPGCF5000     |
| Slate Grey (RAL 7015)  | WVELEGR7015CF5000 | WVELIGR7015CF5000 |
| Redwood                | WVELERWCF5000     | WVELIRWCF5000     |
| Plain Golden Oak       | WVELIOGCF5000     | WVELEOGCF5000     |
| Chartwell Green        | WVELECGCF5000     | -                 |
| Light Cream (RAL 9001) | WVELECR9001CF5000 | WVELICR9001CF5000 |

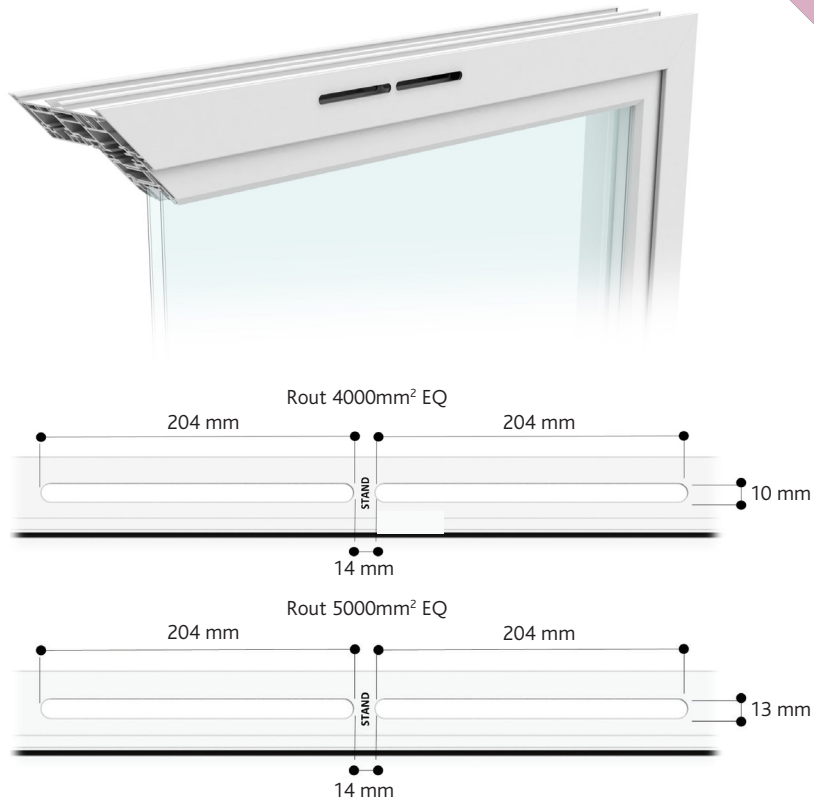
| Woodgrain Finish | Internal Vent   | External Vent   |
|------------------|-----------------|-----------------|
| Golden Oak       | WVELEPWGOCF5000 | WVELIPWGOCF5000 |
| Rosewood         | WVELEPWROCF5000 | WVELIPWROCF5000 |

Other colours available, please contact us for the latest range.

### Packaging

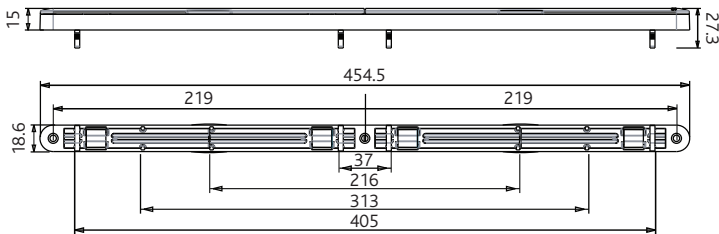
#### 5000 Trickle Vent

Internal and external vents sold separately. 100 per box.

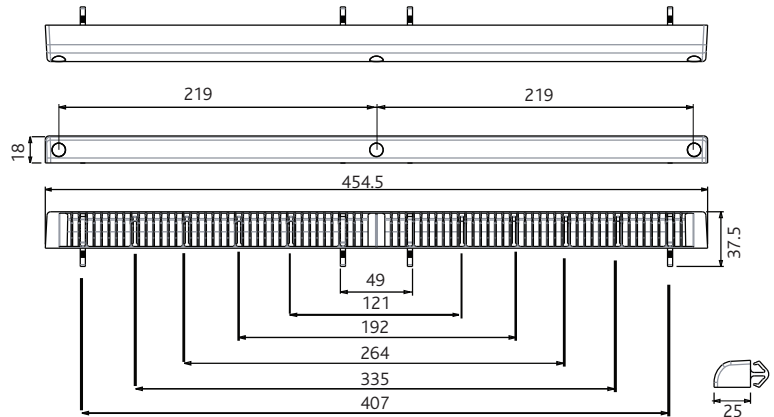


| Internal   |        |        |               | External |        |        |               |                                     |        |        |               | Ventilator      |             |             |              |
|------------|--------|--------|---------------|----------|--------|--------|---------------|-------------------------------------|--------|--------|---------------|-----------------|-------------|-------------|--------------|
| Ventilator |        |        |               | Canopy   |        |        |               | Grille (Timber, Sliding door, Sash) |        |        |               | Attachment type | Rout H (mm) | Rout L (mm) | Stand W (mm) |
| H (mm)     | L (mm) | D (mm) | Weight (gram) | H (mm)   | L (mm) | D (mm) | Weight (gram) | H (mm)                              | L (mm) | D (mm) | Weight (gram) |                 |             |             |              |
| 18.5       | 454.5  | 15     | 60            | 18.5     | 454.5  | 25     | 49            | 26                                  | 436    | 2.5    | 20            | Clip or Screw   | 13 or 10    | 2x204       | 14           |

#### Internal Vent



#### External Vent



All dimensions are in mm. We reserves the right to change specification without notice. It is the responsibility of the window manufacturer and installer to ensure that the finished product meets any required building, safety and performance regulations.