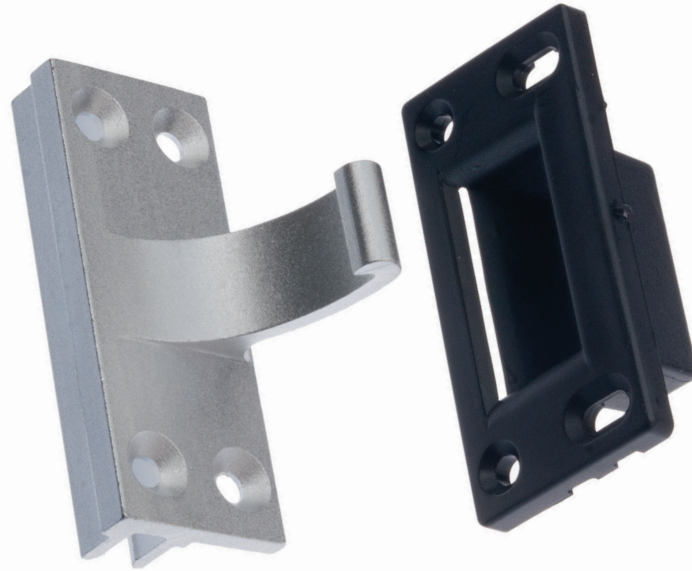


Dog Bolt



Features

- Designed to give enhanced protection to doors fitted with non PAS compliant hinges, allowing door systems to achieve hinge side PAS 24 performance
- On closing the door the aluminium hook passes through the receiver into the routed chamber within the frame
- In the event of an unauthorised force applied to the door sash, the dog bolt automatically engages into the frame reinforcing preventing entry
- Available in two solutions to suit most major PVCu door systems and has two receivers available dependent upon application

Dog Bolt

Ordering Details

Dog Bolt	Part No.	
Type 1	DADBSA0004	Profile dependent (Please see below)
Type 2	DADBSA0007	Profile dependent (Please see below)

Receiver	Part No.	
Type 1	DADDBL0005	(Profile specific)
Type 2	DADDBL0008	(General application)

Profile Application

Profile Company	Frame No.	Sash No.	Dogbolt Type	Receiver Type
Rehau 706 (IG)	546180	546625	DADBSA0007	DADDBL0005
Rehau 706	546180	546221	DADBSA0007	DADDBL0005
Rehau Tritec	F80	T107	DADBSA0004	DADDBL0005
Veka FS	106.160	105.168	DADBSA0007	DADDBL0005
Veka 70	101.109	105.164	DADBSA0007	DADDBL0005
Veka 58	101.140	105129	DADBSA0004	DADDBL0008
Deceuninck	1801	1807	DADBSA0004	DADDBL0005
Eurocell 70	EWS 006	EWS 008	DADBSA0007	DADDBL0008
Eurocell 60	6006	6008	DADBSA0004	DADDBL0008
Eurocell Logik	EWS 7006	EWS 7018	DADBSA0004	DADDBL0008
Eurocell Logik Ovalo	EWS 7706	EWS 7718	DADBSA0007	DADDBL0008
Eurocell Logik Ovalo	EWS 7706	EWS 7719	DADBSA0007	DADDBL0008
Kommerling Gold (70mm)	1801	1816	DADBSA0007	DADDBL0008
Kommerling Connoisseur	1906	1916	DADBSA0004	DADDBL0008
Synseal Shield	F71	DV71	DADBSA0007	DADDBL0008
Synseal Synergy	4F2	4DV1	DADBSA0007	DADDBL0008
Legend 70	11499	11496	DADBSA0004	DADDBL0005
Duraflex Diamond	TD3000	TD3002	DADBSA0004	DADDBL0008
Duraflex Feature	TD7502	TD6065	DADBSA0007	DADDBL0008
Marshall Tuflex	F21-57	V21-75	DADBSA0007	DADDBL0008
LB7000	SK7742	SK7744	DADBSA0004	DADDBL0008
Status 70	6944	6946	DADBSA0007	DADDBL0008
WHS Eclipse	P50202	P50210	DADBSA0007	DADDBL0008
Bowater Eclipse				
H.I.S	X740	X748	DADBSA0007	DADDBL0008
HW70	070102	070203	DADBSA0007	DADDBL0008
Rehau S706	546180	546910	DADBSA0004	DADDBL0005

For any profiles/systems not listed, please contact the Sales Office

Technical Information

Corrosion resistance

Meets the requirements of BS EN 1670: 2007 (Grade 4-240 hours)

Operation

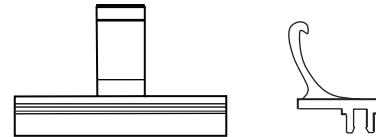
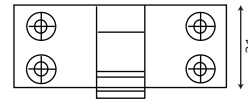
Profile specific, available on request

Material Specification

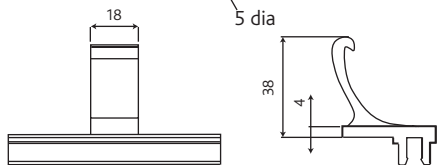
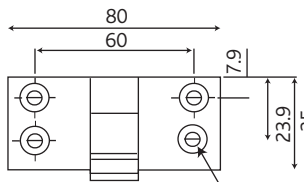
Dog Bolt: Aluminium, anodised silver finish

Receiver: Black Nylon

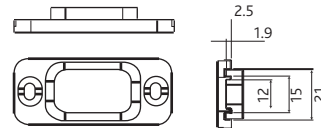
Type 1



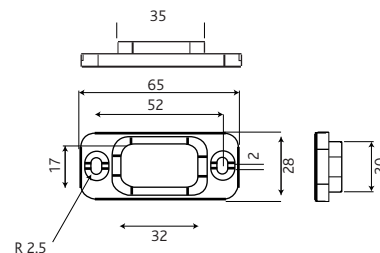
Type 2



Stepped Receiver (Type 1)



Plain Receiver (Type 2)



All dimensions are in mm.

ERA reserves the right to change specification without notice. It is the responsibility of the door manufacturer to ensure that the finished product meets any required safety and performance specification.

Maintenance

The mechanism is self-lubricating, but can be lightly lubricated twice per year and the surface cleaned with a soft damp cloth to remove any dust or grime. The product should be periodically adjusted and fixings tightened to ensure a satisfactory operation.

Packaging

Dog Bolt
100 per box

Receiver
100 per box