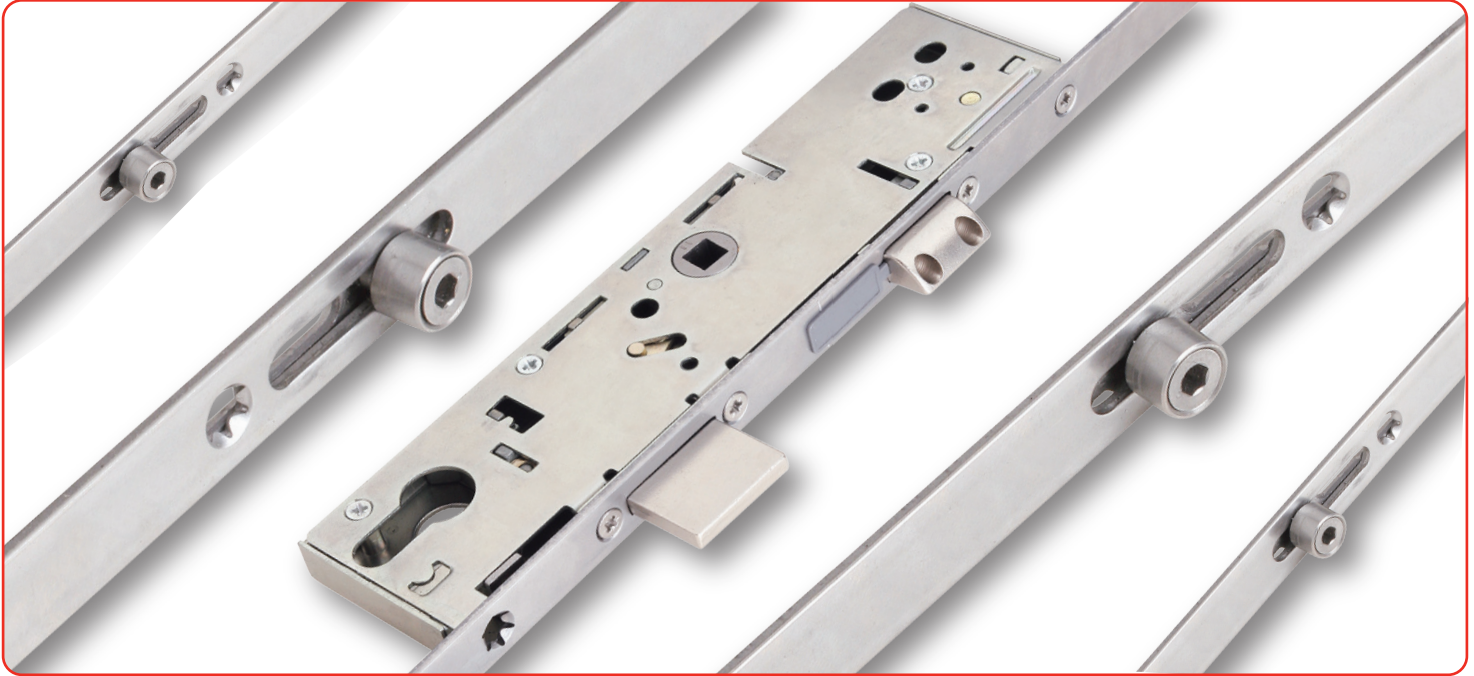


4 Roller Euro Cylinder Door Lock



Features

- Available as 28mm, 30mm, 35mm and 45mm Backsets, with 16mm face bar
- Non-handed lock mechanism with reversible sash bolt to minimise stock requirements
- Snib facility as standard on all locks
- Central brass deadbolt throws 22mm to prevent unauthorised entry
- Bi-directional throw of locking features
- Precision adjustable rollers for enhanced performance and weathersealing
- Accepts standard 92mm unsprung handles and euro profile cylinders (operates with BS and DIN specification cylinders and most other types of cylinder)
- Split spindle for lever/pad applications - choice of length available
- Patented steel keeps with adjustable centre keep offering $\pm 2.0\text{mm}$
- Easy-fit packer system for alternative profiles



Keeps (5000 series)



Keeps (6000 series)

4 Roller Euro Cylinder Door Lock

Ordering Details

To select the required 4 roller MPL part number, use the tables below to determine:

1. The backset
2. The position of the rollers

KEY

B	Backset
DL	Datum Line
OL	Overall Length
TR1	Top Roller 1
TR2	Top Roller 2
BR1	Bottom Roller 1
BR2	Bottom Roller 2

OPTION 1

B	DL	OL	TR1	TR2	BR1	BR2	Part No.
28	1050	2250	260	730	410	880	6028-00-85AA
30	"	"	"	"	"	"	6030-00-85AA
35	"	"	"	"	"	"	6035-00-85AA
45	"	"	"	"	"	"	6045-00-85AA

OPTION 2

B	DL	OL	TR1	TR2	BR1	BR2	Part No.
30	1050	2250	260	705	425	780	6030-00-85BA
35	"	"	"	"	"	"	6035-00-85BA

Technical Information

Corrosion resistance

Meets the requirements of BS EN 1670:2007 Grade 4 (240 hours)

Operation

Endurance tested in excess of 50,000 cycles

Material Specification

Lock case: Steel BZP CR3 Passivate + Seal

Face bar: Steel BZP CR3 Passivate + Seal

Dead/Sash bolt: Steel BZP CR3 Passivate + Seal

Rollers: Steel BZP CR3 Passivate + Seal

Keeps: Steel BZP CR3 Passivate + Seal

Packaging

Locks:

5 locks per box

Maintenance

All moving parts should be lightly lubricated using a light non-acidic mineral oil (e.g. "3 in 1") twice per year and the surface cleaned with a soft damp cloth. The product may need to be adjusted and fixings tightened to ensure a satisfactory operation.

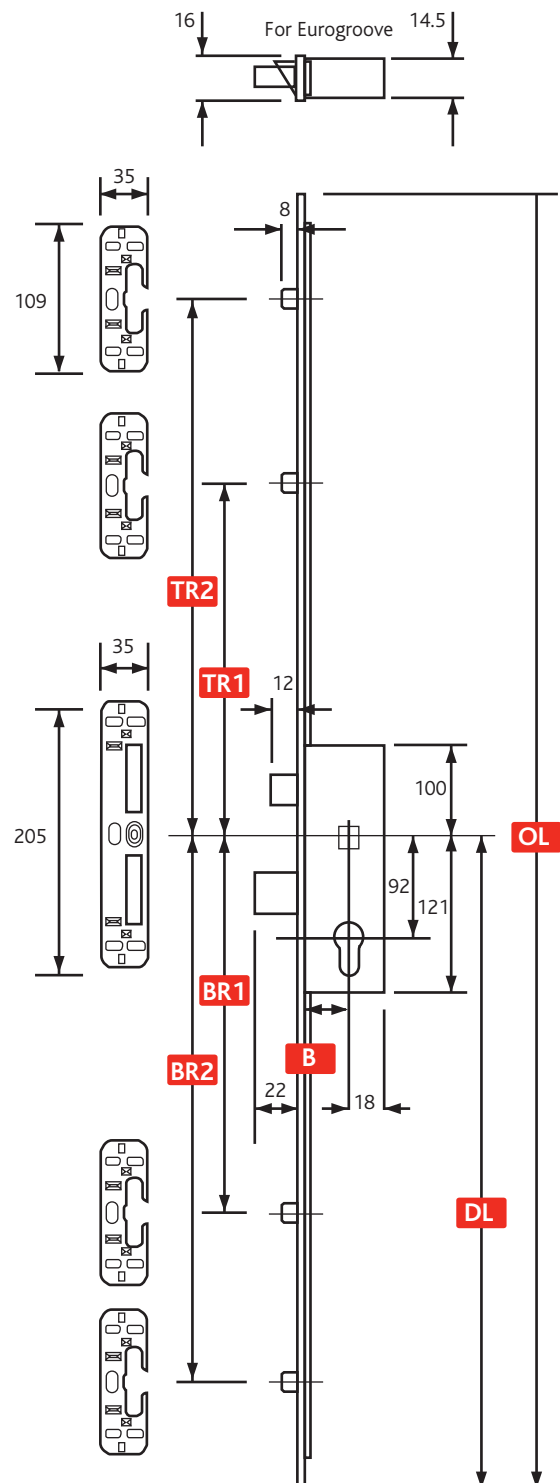


Diagram illustrates product in locked position.

All dimensions are in mm and are nominal.

ERA reserves the right to change specification without notice. It is the responsibility of the door manufacturer to ensure that the finished product meets any required safety and performance specification.