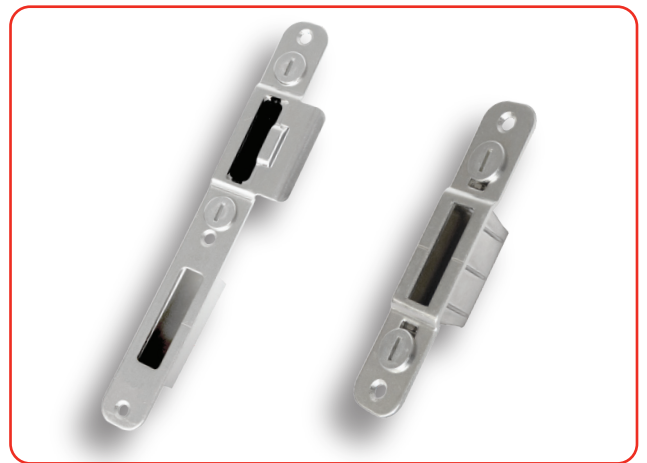


2 Hook Invincible Cylinder Door Lock



Features

- Designed to meet the requirements of PAS 24 as part of a compliant door system, and BS 6375
- Suitable for use with the Invincible and standard euro cylinder with interchangeable lugs on the gearbox
- Available as 45mm Backset, with 20mm round ended and full length options
- Non-handed lock mechanism with reversible sash bolt to minimise stock requirements
- Snib facility as standard
- Central brass deadbolt throws 22mm to prevent unauthorised entry
- Bi-directional throw of locking features – enhanced anti-jimmy feature
- Twin high security forged brass hooks for anti-separation resistance - 10mm (maximum) engagement into keeps
- Hooks deadlocked in the fully thrown position
- Suites with the Balmoral and Windsor Invincible handles
- Split spindle for lever/pad applications - choice of length available
- Adjustable steel keeps giving $\pm 2.0\text{mm}$ for composite and timber doors (non-adjustable composite and timber keeps also available)
- Single and French door (passive lock unit) applications



Keeps

2 Hook Invincible Cylinder Door Lock

Ordering Details

To select the required 2 hook MPL part number, use the tables below to determine:

1. The face bar and backset
2. The overall length of the unit
3. The position of the hooks

KEY

| | |
|-----------|----------------|
| B | Backset |
| FB | Face Bar |
| DL | Datum Line |
| OL | Overall Length |
| TH | Top Hook |
| BH | Bottom Hook |

OPTION 1 - Full Length

| B | FB | DL | OL | TH | BH | Part No. |
|----|----|-----|------|-----|-----|-------------------|
| 45 | 20 | 975 | 2137 | 728 | 667 | 6945-INV-604-79MA |

OPTION 2 - Round Ended

| B | FB | DL | OL | TH | BH | Part No. |
|----|----|-----|------|-----|-----|-------------------|
| 45 | 20 | 787 | 1635 | 728 | 667 | 6945-INV-609-79ZA |

Technical Information

Corrosion resistance

Meets the requirements of BS EN 1670:2007 Grade 4 (240 hours)

Operation

Endurance tested in excess of 50,000 cycles

Performance

Tested to meet the requirements of PAS 24 as part of a compliant door set

Material Specification

| | |
|---------------------------|--------------------------------|
| Lock case: | Steel BZP CR3 Passivate + Seal |
| Face bar: | Stainless Steel 430 |
| Hooks and Dead/Sash bolt: | Steel BZP CR3 Passivate + Seal |
| Keeps: | Steel BZP CR3 Passivate + Seal |

Packaging

Locks:

5 locks per box

Maintenance

All moving parts should be lightly lubricated using a light non-acidic mineral oil (e.g. "3 in 1") twice per year and the surface cleaned with a soft damp cloth. The product may need to be adjusted and fixings tightened to ensure a satisfactory operation.

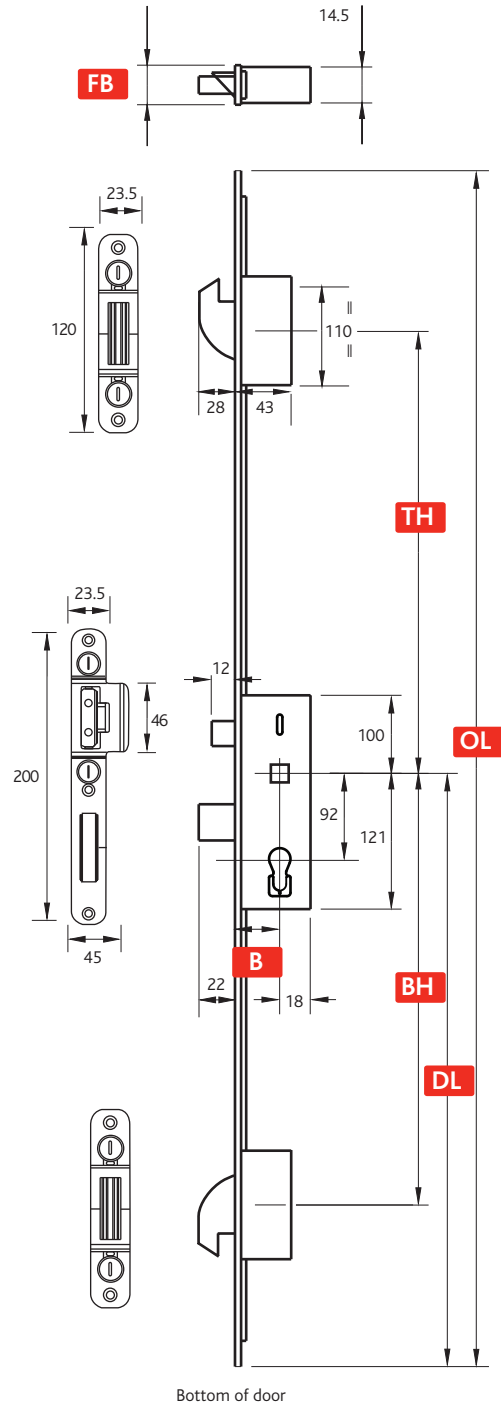


Diagram illustrates product in locked position.

All dimensions are in mm and are nominal.

ERA reserves the right to change specification without notice.

It is the responsibility of the door manufacturer to ensure that

the finished product meets any required safety and performance specification.