

Haven Intelligent Strength

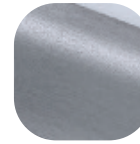


Features

- Low Profile design specifically for composite doors**
 Dedicated performance, unobtrusive appearance
- Sash plate options to suit all composite slabs**
 Optimal hinge for all composite door types
- Sash piece can be routed into door, slotted into faceplate liner or screwed directly onto edge of sash**
 Precision fit with or without door liner
- Integral fixing lugs**
 Additional stability and strength
- Security anti-lift pin**
 Prevents intruder from removing the pin and lifting out the door
- 3D adjustable with supplied Allen keys**
 Allows for final tweaking and alignment
- Sash piece, frame piece and pin packaged separately**
 Packaged for fabricating flexibility
- 30kg sash weight load per hinge**
 Support up to 90kg weight with 3 hinges
- Fixing jigs available**
 Faster, more accurate fabrication
- Cover caps for horizontal adjustment holes**
 Professional finish to hinge installation



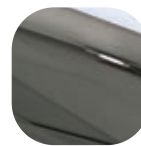
Hardex
Chrome



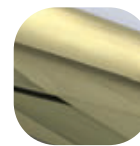
Hardex
Graphite



White



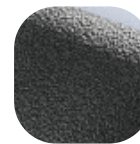
Hardex
Bronze



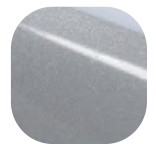
Hardex
Gold



Black



Antique
Black



Silver

Haven Intelligent Strength

Ordering Details

Product

Haven Intelligent Strength Sash Piece

Finish	Part No.		
Size	4R16	4R10	3R10
Hardex Chrome	2C054	2C104	2C154
Hardex Bronze	2C056	2C106	2C156
Hardex Gold	2C058	2C108	2C158
Hardex Graphite	2C061	2C111	2C161
Antique Black	2C059	2C109	2C159
White	2C050	2C100	2C150
Black	2C051	2C101	2C151
Silver			2C152

Haven Intelligent Strength Frame Piece

Hardex Chrome	2C004
Hardex Bronze	2C006
Hardex Gold	2C008
Hardex Graphite	2C011
Antique Black	2C009
White	2C000
Black	2C001
Silver	2C002

Haven Intelligent Strength Pin and Components

White	2C900
Black	2C901

Technical Information

Corrosion resistance

All finishes salt spray tested to 480 hours (BS EN 1670: Class 5)

Operation

Tested to 200,000 cycles

Adjustment

Horizontal adjustment of +/-2mm; height adjustment of +/-3mm; compression adjustment of +/-1.5mm.

Performance

Tested with 3 hinge up to 90kg sash weight

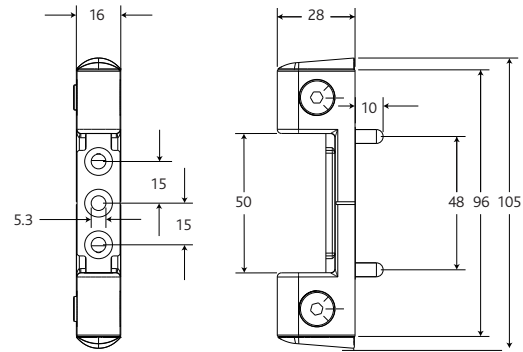
Maintenance

For continued protection of the quality finish and appearance, we advise routine cleaning of all our external hardware. We recommend wiping it with a clean cloth soaked in warm water and mild detergent every month. Please refrain from using heavy-duty cleaners, containing Chlorine or Potassium. Moving parts should also be lightly lubricated using a light non-acidic mineral oil (e.g., "3 in 1") at least twice per year. The product may need to be adjusted and fixings tightened to ensure a satisfactory operation. This procedure is particularly essential if products are used within a 25-mile radius of coastal areas or close proximity to building sites or large industrial areas, where more frequent cleaning may be required to prevent the accumulation of corrosive contaminants.

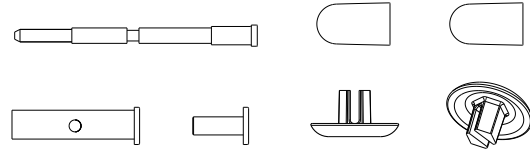
Packaging

Hinge
18 hinges per box (frame and sash pieces sold separately)

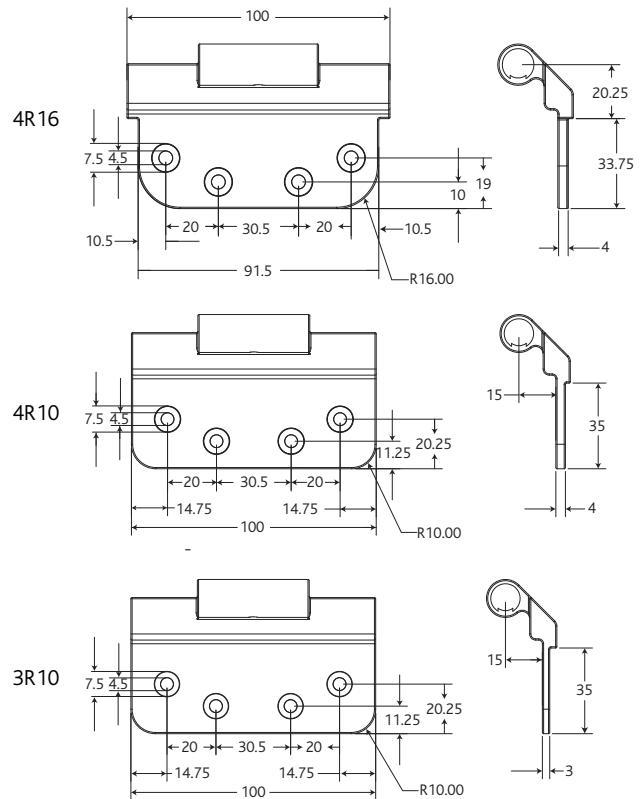
Frame Piece



Pin and Components



Sash Piece



All dimensions are in mm and are nominal.
Fab&Fix reserves the right to change specification without notice
It is the responsibility of the door manufacturer to ensure that the finished product meets any required safety and performance specification.