

### Windsor Inline Lever Lever Unsprung



### Features

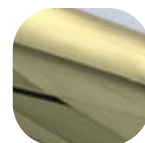
- **Solid die cast Zinc construction**  
Sturdy feel
- **Compact baseplate with screws in close proximity**  
Combats lever attack
- **Sculpted ergonomic lever and low friction nylon bush**  
Easy to grip and smooth action
- **Supplied with screw and spindle pack to suit 60-70mm profiles**  
Everything needed for installation included
- **Colour coordinated screw heads**  
Perfectly matching hardware, even down to the smallest details
- **Baseplate in common with all Windsor handles**  
Same routing detail regardless of product variant chosen
- **Wide backplate**  
To suit cylinder guards and accommodate larger cylinder preparation
- **Supplied with care instructions**  
Helps the homeowner to keep the hardware in optimal condition
- **Supplied fully assembled**  
Simple and quick installation, no need to fit springs or lever
- **Silicon Site-Protectors available**  
Ensures perfect condition after installation
- **Each part packaged in a separate chamber, but supplied as a set**  
No scratching of parts during transit



Hardex  
Chrome



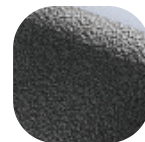
Hardex  
Bronze



Hardex  
Gold



White



Antique  
Black

### Windsor Inline Lever Lever Unsprung

#### Ordering Details

##### Product

Windsor Inline Lever Lever Unsprung

##### Finish

##### Part No.

Hardex Chrome	1F051
Hardex Bronze	1F053
Hardex Gold	1F055
Antique Black	1F056
White	1F050

#### Technical Information

##### Corrosion resistance

Meets the requirements of BS EN 1670:2007 Grade 5 (480 hours)

##### Operation

Endurance tested in excess of 200,000 cycles

##### Performance

Tested to meet the requirements of PAS 24 as part of a compliant door set

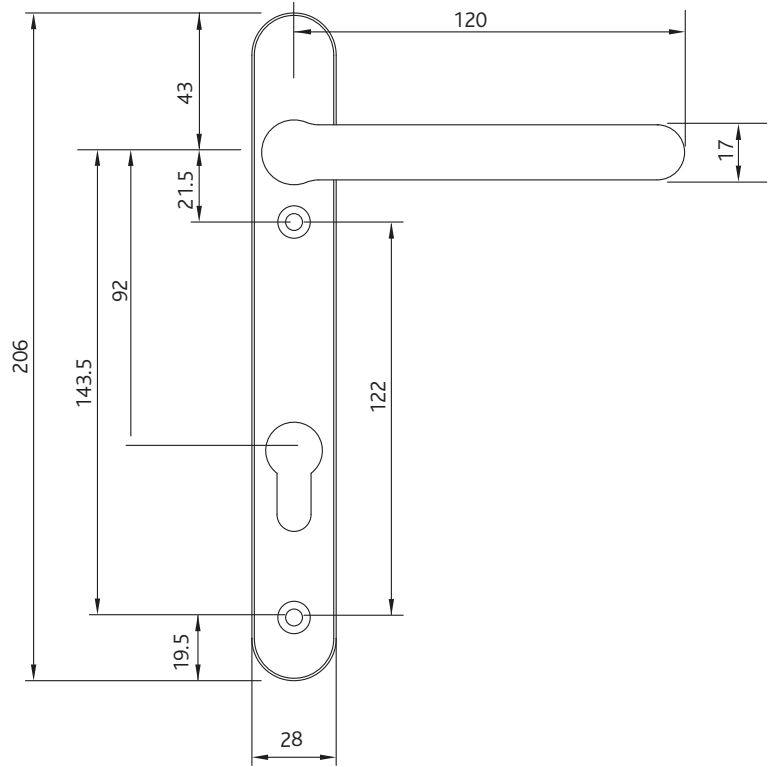
#### Material Specification

Handle Grip and Backplate: High quality Zinc for all finishes

Coatings: Hardex Chrome, Hardex Bronze, Hardex Gold, Antique Black and White

Spindle / Screws: Machine screws with colour coordinated heads for handle. 60mm - 70mm profiles (1 x 8mm x 120mm spindle; 2 x M5 x 70mm and 2x M5 x 80mm screws)

Cylinder: Euro Cylinder, 92mm PZ



#### Maintenance

For continued protection of the quality finish and appearance, we advise routine cleaning of all our external hardware. We recommend wiping it with a clean cloth soaked in warm water and mild detergent every month. Please refrain from using heavy-duty cleaners, containing Chlorine or Potassium. Moving parts should also be lightly lubricated using a light non-acidic mineral oil (e.g. "3 in 1") at least twice per year. The product may need to be adjusted and fixings tightened to ensure a satisfactory operation. This procedure is particularly essential if products are used within a 25-mile radius of coastal areas or close proximity to building sites or large industrial areas, where more frequent cleaning may be required to prevent the accumulation of corrosive contaminants.

#### Packaging

##### Handles

Individually bagged with screws, spindle and care instructions. 15 handles in an outer box.

All dimensions are in mm and are nominal.  
 Fab&Fix reserves the right to change specification without notice  
 It is the responsibility of the door manufacturer to ensure that the finished product meets any required safety and performance specification.