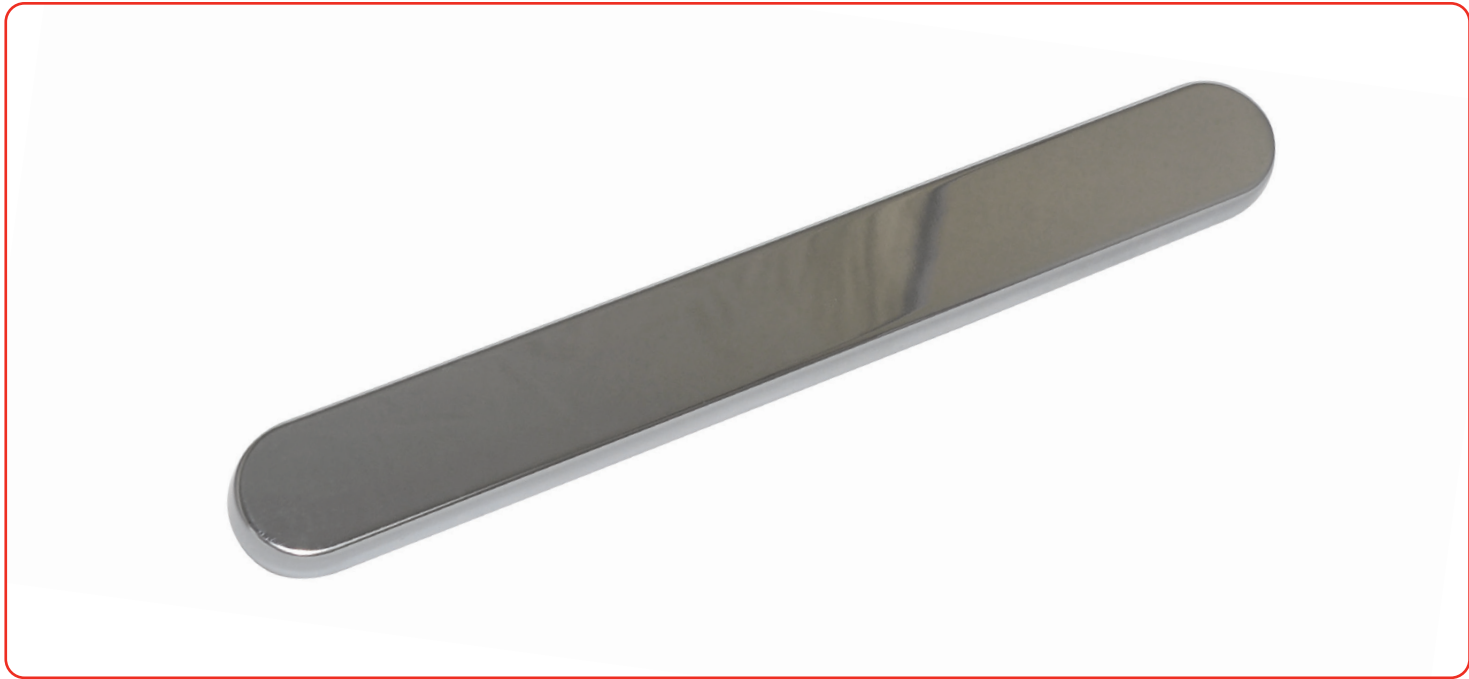
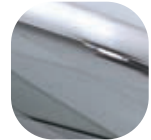


## Windsor Exterior Blank Plate

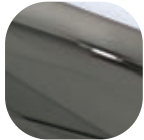


### Features

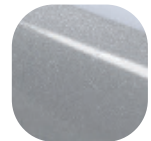
- **Solid die cast construction**  
Sturdy feel
- **Flexible purpose component**  
Enables all aspects of a job to be completed as a perfectly matching set
- **Baseplate common with all Windsor handles**  
Same routing detail regardless of product variant chosen



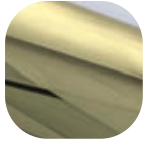
Hardex  
Chrome



Hardex  
Bronze



Silver



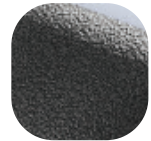
Hardex  
Gold



Black



White



Antique  
Black

### Windsor Exterior Blank Plate

#### Ordering Details

##### Product

##### Windsor Exterior Blank Plate

Finish	Part No.
Hardex Chrome	1F351
Hardex Bronze	1F353
Hardex Gold	1F355
Antique Black	1F356
White	1B100
Black	1B101
Silver	1B102

For additional part numbers please contact our sales office.

#### Technical Information

##### Corrosion resistance

Meets the requirements of BS EN 1670:2007 Grade 5 (480 hours)

##### Material Specification

Backplate: High quality Zinc for all Hardex finishes and Antique Black. High quality Aluminium for White, Black and Silver finishes

Coatings: Hardex Chrome, Hardex Bronze, Hardex Gold, Antique Black, White, Black and Silver

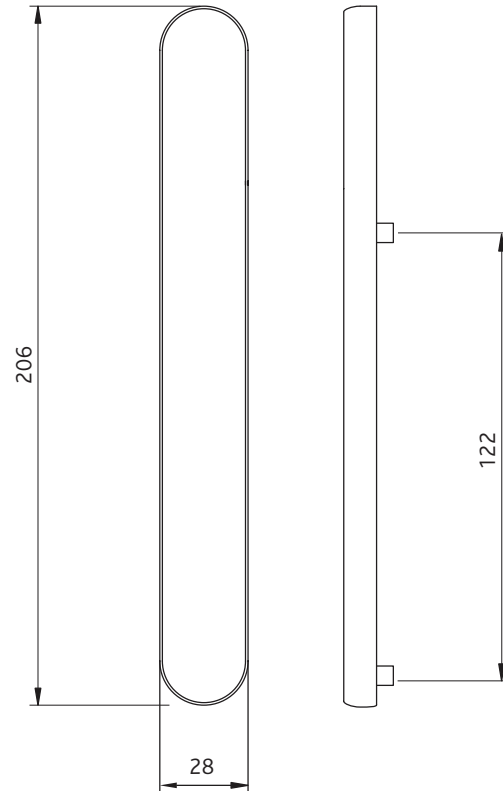
#### Maintenance

For continued protection of the quality finish and appearance, we advise routine cleaning of all our external hardware. We recommend wiping it with a clean cloth soaked in warm water and mild detergent every month. Please refrain from using heavy-duty cleaners, containing Chlorine or Potassium. Moving parts should also be lightly lubricated using a light non-acidic mineral oil (e.g., "3 in 1") at least twice per year. The product may need to be adjusted and fixings tightened to ensure a satisfactory operation. This procedure is particularly essential if products are used within a 25-mile radius of coastal areas or close proximity to building sites or large industrial areas, where more frequent cleaning may be required to prevent the accumulation of corrosive contaminants.

#### Packaging

##### Handles

Individually bagged.  
15 plates in an outer box.



All dimensions are in mm and are nominal.  
Fab&Fix reserves the right to change specification without notice.  
It is the responsibility of the door manufacturer to ensure that the finished product meets any required safety and performance specification.