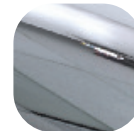


Windsor Inline for Invincible Cylinder

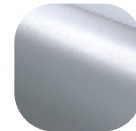


Features

- Designed to complement the high security Invincible Cylinder and Door Lock**
 Maximising security with a newly designed robust 'squared' off cylinder that significantly strengthens against attack
- Solid die cast zinc construction with heavy duty spring cassette**
 Sturdy feel with consistent 90 degree lever return
- Sculpted ergonomic lever and low friction nylon bush**
 Easy to grip and smooth action
- Wide 28mm backplate**
 To suit the Invincible cylinder, the handle eases production tolerances whilst achieving an aesthetically balanced product
- Available fully packaged for either PVCu (60-70mm) or Composite/Timber (44mm) doors**
 Quick and easy with all parts needed for installation
- Handle supplied fully assembled**
 Simple and quick installation, no need to fit springs or lever
- Colour coordinated screw heads**
 Perfectly matching hardware, even down to the smallest details
- Supplied with care instructions**
 Helps the homeowner to keep the hardware in optimal condition
- Available in the complete spectrum of Hardex finishes**
 Can be perfectly matched to the full Fab&Fix range of products
- Clever packaging designed for ease of installation and transport**
 One bag contains all parts inclusive that can be delivered separately to the installer



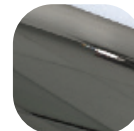
Hardex Chrome



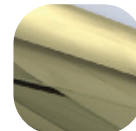
Hardex Satin



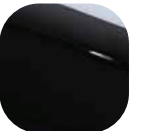
White



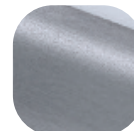
Hardex Bronze



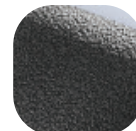
Hardex Gold



Black



Hardex Graphite



Antique Black



Silver

Windsor Inline for Invincible Cylinder

Ordering Details

Product

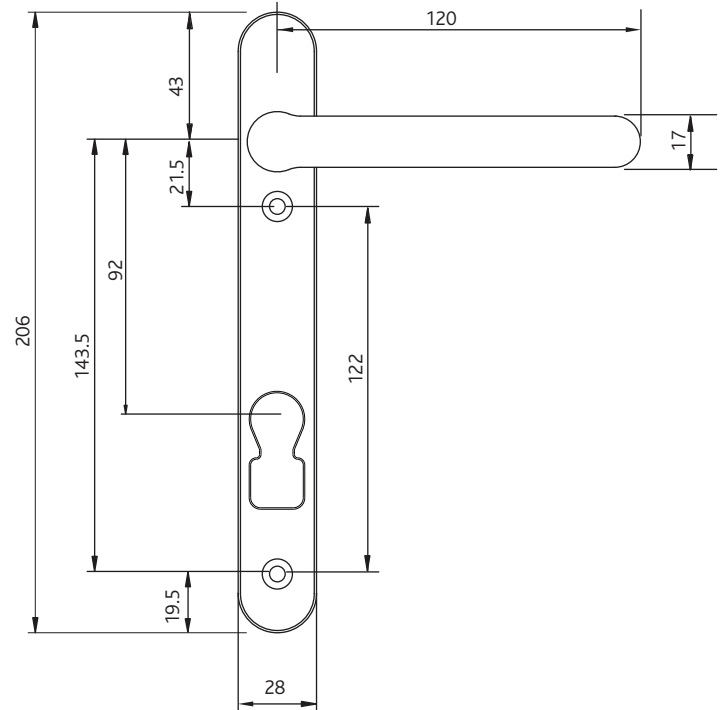
Finish	44mm Doors	70mm Doors
--------	---------------	---------------

Windsor Inline Lever Lever

Hardex Chrome	1U150	1U000
Hardex Satin	1U151	1U001
Hardex Bronze	1U152	1U002
Hardex Gold	1U153	1U003
Hardex Graphite	1U155	1U005
Antique Black	1U154	1U004
White	1T100	1T000
Black	1T101	1T001
Silver	1T102	1T002

Windsor Inline Lever Pad

Hardex Chrome	1U200	1U050
Hardex Satin	1U201	1U051
Hardex Bronze	1U202	1U052
Hardex Gold	1U203	1U053
Hardex Graphite	1U205	1U055
Antique Black	1U204	1U054
White	1T150	1T050
Black	1T151	1T051
Silver	1T152	1T052



Technical Information

Corrosion resistance

Meets the requirements of BS EN 1670:2007 Grade 5 NSS Corrosion Resistance (480 hours)

Operation

Fuction test to 200,000 cycles

Performance

Tested to meet the requirements of PAS 24 as part of a compliant door set

Material Specification

Handle Grip and Backplate:	High quality Aluminium
Coatings:	Hardex Chrome, Hardex Satin, Hadex Gold, Hardex Graphite, Antique Black
Spindle / Screws:	Mild steel, screws with colour coordinated heads for handle. Option 1 - 44mm profiles (1 x 8mm x 110mm spindle; 2 x M5 x 55mm screws) Option 2 - 60mm - 70mm profiles (1 x 8mm x 120mm spindle; 2 x M5 x 70mm and 2 x M5 x 80mm screws)
Cylinder:	ERA Invinclible position

All dimensions are in mm and are nominal.

Fab&Fix reserves the right to change specification without notice. It is the responsibility of the door manufacturer to ensure that the finished product meets any required safety and performance specification.

Packaging

Handles

Individually bagged with screws, spindle and care instructions. 15 handles in an outer box

Maintenance

All moving parts should be lightly lubricated using a light non-acidic mineral oil (e.g. "3 in 1") twice per year and the surface cleaned with a soft damp cloth. The product may need to be adjusted and fixings tightened to ensure a satisfactory operation.