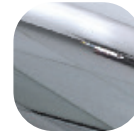


Balmoral Inline for Invincible Cylinder

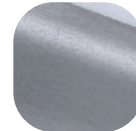


Features

- Designed to complement the high security Invincible Cylinder and Door Lock**
 Maximising security with a newly designed robust 'squared' off cylinder that significantly strengthens against attack
- Solid die cast zinc construction with heavy duty spring cassette**
 Sturdy feel with consistent 90 degree lever return
- Sculpted ergonomic lever and low friction nylon bush**
 Easy to grip and smooth action
- Wide 32mm backplate**
 To suit the Invincible cylinder, the handle eases production tolerances whilst achieving an aesthetically balance product
- Available fully packaged for either PVCu (60-70mm) or Composite/Timber (44mm) doors**
 Quick and easy with all parts needed for installation
- Handle supplied fully assembled**
 Simple and quick installation, no need to fit springs or lever
- Colour coordinated screw heads**
 Perfectly matching hardware, even down to the smallest details
- Supplied with care instructions**
 Helps the homeowner to keep the hardware in optimal condition
- Available in the complete spectrum of Hardex finishes**
 Can be perfectly matched to the full Fab&Fix range of products
- Clever packaging designed for ease of installation and transport**
 One bag contains all parts inclusive that can be delivered separately to the installer



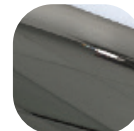
Hardex Chrome



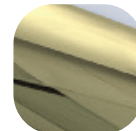
Hardex Graphite



White



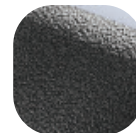
Hardex Bronze



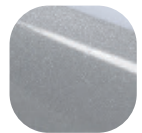
Hardex Gold



Black



Antique Black



Silver



10 YEAR
Mechanical
Guarantee



PVCu Timber Composite



ERA
Total Security
Guarantee



PAS
024

Balmoral Inline for Invincible Cylinder

Ordering Details

Product

Balmoral Inline Lever Lever

Finish	44mm Doors Inline Lever / Lever	70mm Doors Inline Lever / Lever
Hardex Chrome	1U600	1U500
Hardex Bronze	1U602	1U502
Hardex Gold	1U603	1U503
Hardex Graphite	1U605	1U505
Antique Black	1U604	1U504
White	1T600	1T500
Black	1T601	1T501
Silver	1T602	1T502

Balmoral Inline Lever Pad

Finish	44mm Doors Inline Lever / Pad	70mm Doors Inline Lever / Pad
Hardex Chrome	1U650	1U550
Hardex Bronze	1U652	1U552
Hardex Gold	1U653	1U553
Hardex Graphite	1U655	1U555
Antique Black	1U654	1U554
White	1T650	1T550
Black	1T651	1T551
Silver	1T652	1T552

Please contact the sales office for cylinder and lock part codes

Technical Information

Corrosion resistance

Meets the requirements of BS EN 1670:2007 Grade 5 NSS Corrosion Resistance (480 hours)

Operation

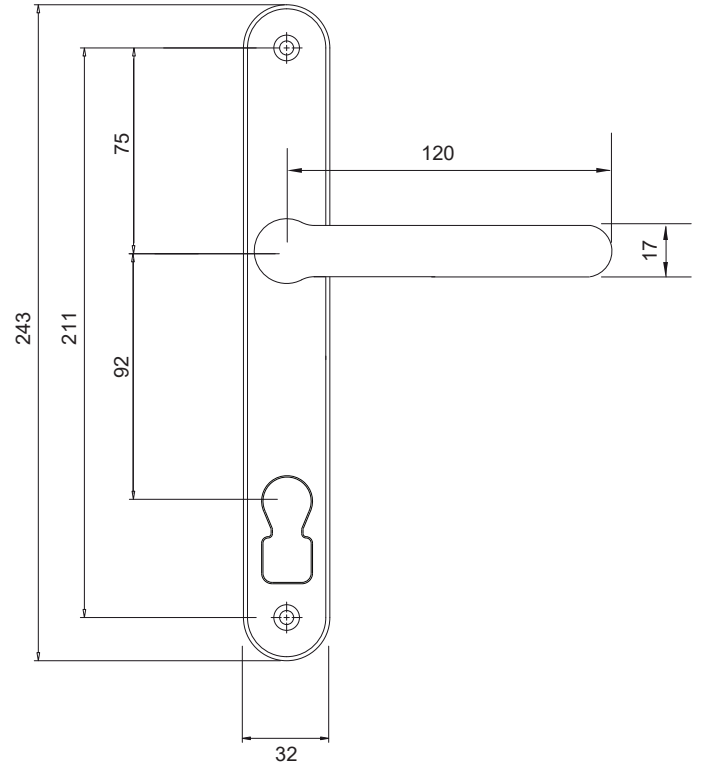
Function test to 200,000 cycles

Performance

Tested to meet the requirements of PAS 24 as part of a compliant door set

Material Specification

Handle Grip and Backplate:	High quality Zinc/ Aluminium
Coatings:	Hardex Chrome, Bronze, Gold, Graphite, Antique Black, White, Black and Silver
Spindle / Screws:	Mild steel, screws with colour coordinated heads for handle. Option 1 - 44mm profiles (1 x 8mm x 110mm spindle; 2 x M5 x 55mm screws) Option 2 - 60mm - 70mm profiles (1 x 8mm x 120mm spindle; 2 x M5 x 70mm and 2 x M5 x 80mm screws)
Cylinder:	ERA Invincible position



All dimensions are in mm and are nominal.

Fab&Fix reserves the right to change specification without notice. It is the responsibility of the door manufacturer to ensure that the finished product meets any required safety and performance specification.

Packaging

Handles

Individually boxed with screws, spindle and care instructions. 15 handles in an outer box.

Maintenance

For continued protection of the quality finish and appearance, Fab&Fix advise routine cleaning of all our external hardware. Moving parts should also be lightly lubricated at least twice a year. This procedure is particularly essential if products are used within a 25-mile radius of coastal areas or close proximity to building sites or large industrial areas, where more frequent cleaning may be required to prevent the accumulation of corrosive contaminants.