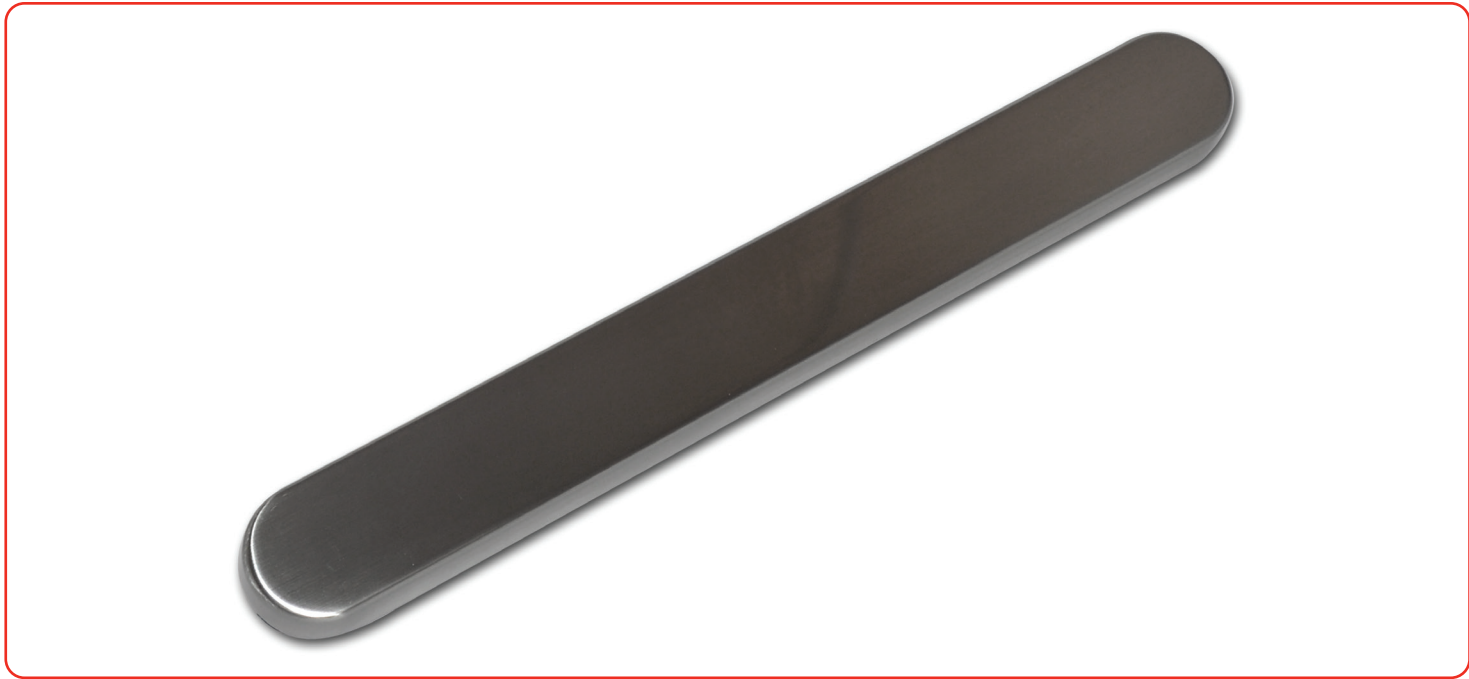
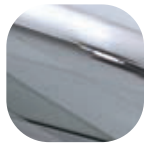


Balmoral Exterior Blank Plate

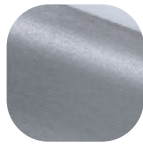


Features

- **Solid die cast construction**
Sturdy feel
- **Flexible purpose component**
Enables all aspects of a job to be completed as a perfectly matching set
- **Baseplate common with all Balmoral handles**
Same routing detail regardless of product variant chosen



Hardex Chrome



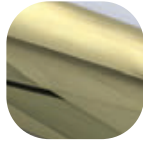
Hardex Graphite



White



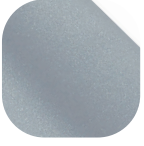
Hardex Bronze



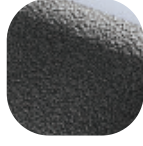
Hardex Gold



Black



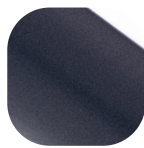
Premium Satin



Antique Black



Silver



Anthracite Grey

Balmoral Exterior Blank Plate

Ordering Details

Product

Balmoral Exterior Blank Plate

Finish	Part No.
Hardex Chrome	1D451
Hardex Bronze	1D453
Hardex Gold	1D455
Hardex Graphite	1D458
Antique Black	1D456
White	1A250
Black	1A251
Silver	1A252
Premium Satin	DHABLPSP
Anthracite Grey	1A254

Technical Information

Corrosion resistance

Meets the requirements of BS EN 1670:2007 Grade 5 (480 hours)

Material Specification

Backplate:	High quality Zinc for all Hardex finishes and Antique Black. High quality Aluminium for Premium Satin, White, Black and Silver finishes
Coatings:	Hardex Chrome, Hardex Bronze, Hardex Gold, Hardex Graphite, Antique Black, Premium Satin, White, Black and Silver

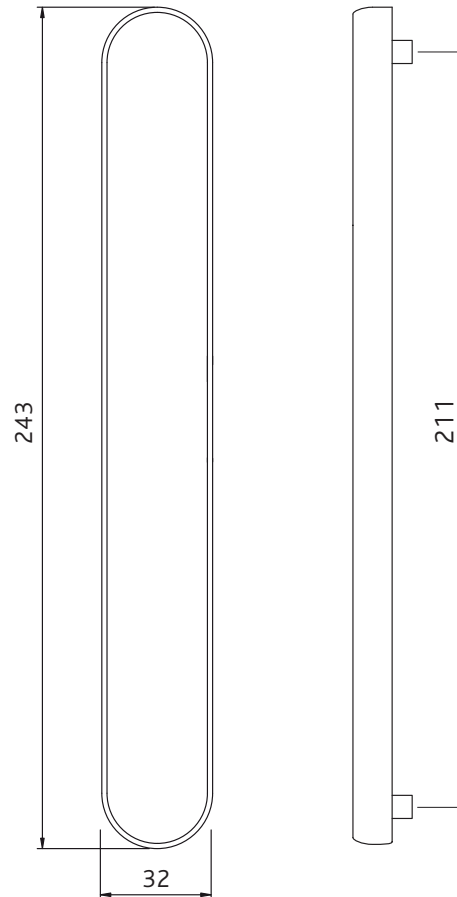
Maintenance

For continued protection of the quality finish and appearance, we advise routine cleaning of all our external hardware. We recommend wiping it with a clean cloth soaked in warm water and mild detergent every month. Please refrain from using heavy-duty cleaners, containing Chlorine or Potassium. Moving parts should also be lightly lubricated using a light non-acidic mineral oil (e.g., "3 in 1") at least twice per year. The product may need to be adjusted and fixings tightened to ensure a satisfactory operation. This procedure is particularly essential if products are used within a 25-mile radius of coastal areas or close proximity to building sites or large industrial areas, where more frequent cleaning may be required to prevent the accumulation of corrosive contaminants.

Packaging

Handles

Individually bagged.
15 plates in an outer box.



All dimensions are in mm and are nominal.
Fab&Fix reserves the right to change specification without notice.
It is the responsibility of the door manufacturer to ensure that the finished product meets any required safety and performance specification.