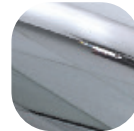


Balmoral Inline for Vectis Plus Multi Point Lock

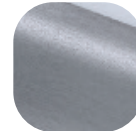


Features

- **Solid construction with heavy duty spring cassette**
Sturdy feel and consistent 90 degree lever return
- **Sculpted ergonomic lever and low friction nylon bush**
Easy to grip and smooth action
- **Complete integrated handle solution for the Vectis Plus Locking System**
No separate adaptor required
- **Patented key guide system**
To suit all profiles and sizes for ease of key alignment
- **Unique patented integral shutter system**
For complete weathersealing performance
- **Wide backplate Lever Lever or Lever Pad designs**
To suit the Vectis Plus Multi Point Lock
- **Supplied with screw and spindle pack to either suit 60-70mm PVCu profiles or 44mm doors**
Everything needed for installation included
- **Colour coordinated screw heads**
Perfectly matching hardware, even down to the smallest details
- **Supplied fully assembled**
Simple and quick installation, no need to fit springs or lever
- **Supplied with care instructions**
Helps the homeowner to keep the hardware in optimal condition
- **Silicon Site-Protectors available**
Ensures perfect condition after installation
- **Each part packaged in a separate chamber, but supplied as a set**
No scratching of parts during transit



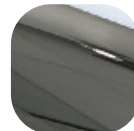
Hardex
Chrome



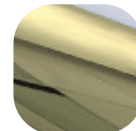
Hardex
Graphite



White



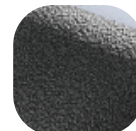
Hardex
Bronze



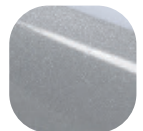
Hardex
Gold



Black



Antique
Black



Silver



10
YEAR
Mechanical
Guarantee



PVCu



Timber



Composite



Balmoral Inline for Vectis Plus Multi Point Lock

Ordering Details

Product

Balmoral Inline Lever for Vectis

| Finish | 44mm Doors Inline Lever / Lever | 70mm Doors Inline Lever / Lever |
|-----------------|------------------------------------|------------------------------------|
| Hardex Chrome | 1D620 | 1D600 |
| Hardex Bronze | 1D622 | 1D602 |
| Hardex Gold | 1D623 | 1D603 |
| Hardex Graphite | 1D625 | 1D605 |
| Antique Black | 1D624 | 1D604 |
| White | 1A620 | 1A600 |
| Black | 1A621 | 1A601 |
| Silver | 1A622 | 1A603 |

Balmoral Inline Lever Pad for Vectis

| Finish | 44mm Doors Inline Lever / Pad | 70mm Doors Inline Lever / Pad |
|-----------------|----------------------------------|----------------------------------|
| Hardex Chrome | - | 1D650 |
| Hardex Bronze | - | 1D652 |
| Hardex Gold | - | 1D653 |
| Hardex Graphite | - | 1D655 |
| Antique Black | - | 1D654 |
| White | - | 1A650 |
| Black | - | 1A651 |
| Silver | - | 1A652 |

Please contact the sales office for cylinder and lock part codes

Technical Information

Corrosion resistance

Meets the requirements of BS EN 1670:2007 Grade 5 (480 hours)

Operation

Function test to 200,000 cycles

Performance

Tested to meet the requirements of PAS 24 as part of a compliant door set

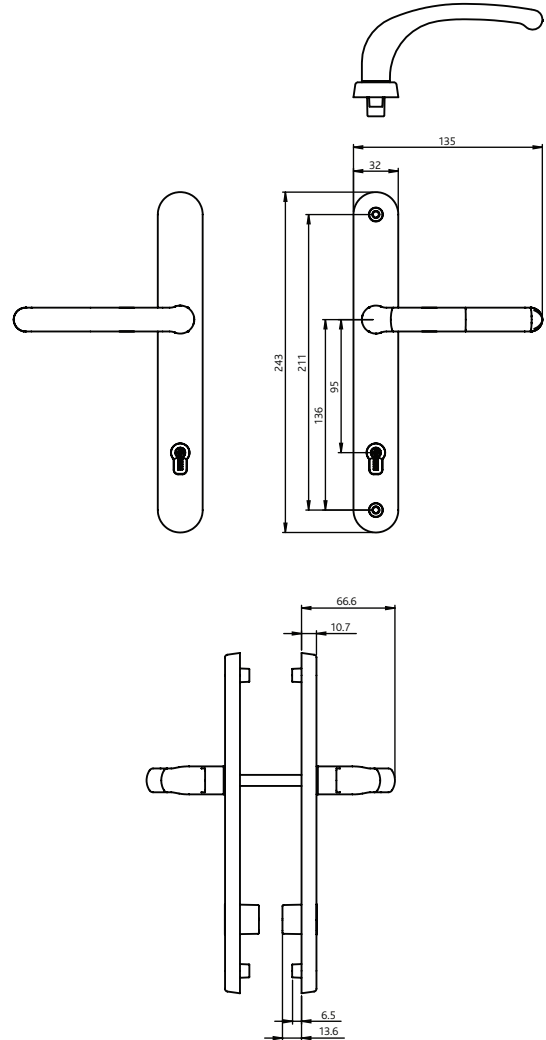
Material Specification

| | |
|----------------------------|---|
| Handle Grip and Backplate: | High quality Zinc / Aluminium |
| Coatings: | Hardex Chrome, Bronze, Gold, Graphite, Antique Black, White, Black and Silver |
| Spindle / Screws: | Mild steel, screws with colour coordinated heads for handle. Option 1 - 44mm profiles (1 x 8mm x 110mm spindle; 2 x M5 x 55mm screws) Option 2 - 60mm - 70mm profiles (1 x 8mm x 120mm spindle; 2 x M5 x 70mm and 2 x M5 x 80mm screws) |

Packaging

Handles

Individually boxed with screws, spindle and care instructions. 15 handles in an outer box.



All dimensions are in mm and are nominal.
Fab&Fix reserves the right to change specification without notice.
It is the responsibility of the door manufacturer to ensure that the finished product meets any required safety and performance specification.

Maintenance

For continued protection of the quality finish and appearance, we advise routine cleaning of all our external hardware. We recommend wiping it with a clean cloth soaked in warm water and mild detergent every month. Please refrain from using heavy-duty cleaners, containing Chlorine or Potassium. Moving parts should also be lightly lubricated using a light non-acidic mineral oil (e.g., "3 in 1") at least twice per year. The product may need to be adjusted and fixings tightened to ensure a satisfactory operation. This procedure is particularly essential if products are used within a 25-mile radius of coastal areas or close proximity to building sites or large industrial areas, where more frequent cleaning may be required to prevent the accumulation of corrosive contaminants.